



Data2Evidence

The open-source platform
for OMOP-based research

Let's unlock the potential
of global health data — together.

Explore now:

▶ data2evidence.org

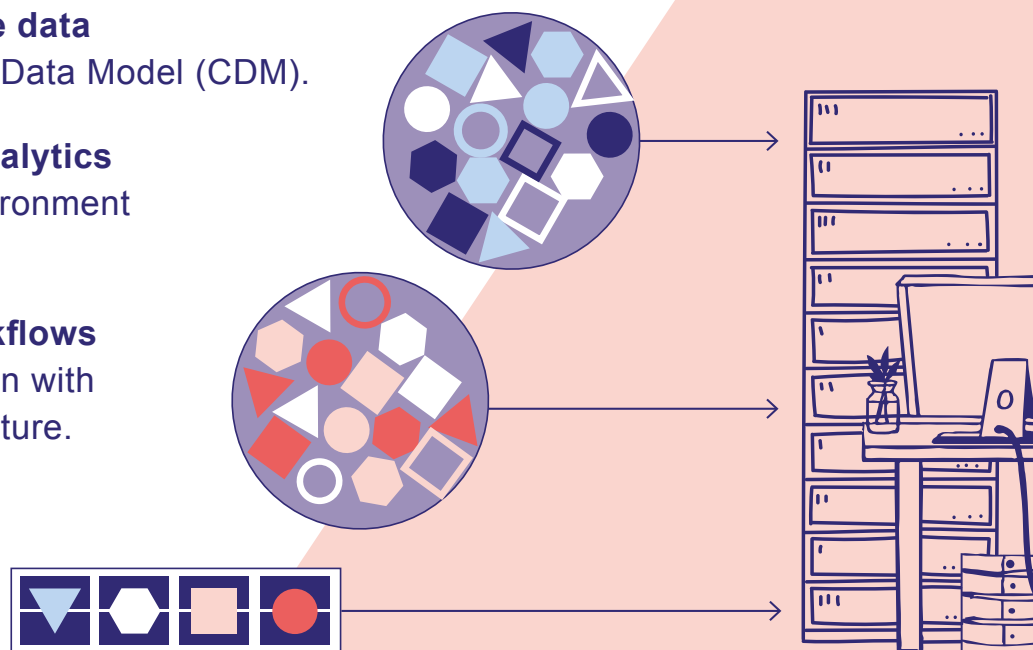
Transforming fragmented health data into actionable insights — with speed and precision.

Modern health data is often stored in inconsistent formats and fragmented across disparate siloed systems, presenting significant technical, regulatory, and access challenges for researchers.

This complexity leads to researchers spending time on data cleaning, unifying formats, and time-consuming cohort definitions, creating a substantial barrier between a research hypothesis and a publishable result. The need for interoperable and high-quality data is more critical than ever.

Data2Evidence is an open-source platform designed to address these challenges directly and fast track OMOP based research. It provides a unified, end-to-end environment that empowers research institutions to:

- **Integrate and standardize data**
using the OMOP Common Data Model (CDM).
- **Conduct collaborative analytics**
in a secure, compliant environment utilizing user-friendly tools.
- **Accelerate research workflows**
and eliminate vendor lock-in with a flexible, modular architecture.



Why Researchers Choose Data2Evidence

- **End-to-End workflows:** Transition from raw data to research-ready cohorts, quality checks, and analytics within one unified environment.
- **Design-centric usability:** A clean, modern interface minimizes technical overhead and decision fatigue, allowing researchers to remain focused on their core questions.
- **Reproducibility & trust:** Built-in validation and consistent workflows ensure that studies are reliable and can be reproduced with a high degree of confidence.
- **Accelerated onboarding:** A lightweight installation process and ready-to-use defaults facilitate fast onboarding, reducing the need for extensive DevOps knowledge.
- **Extensible platform:** The architecture is designed to evolve with research needs, enabling you to build upon it with custom workflows, ML models, and new integrations.
- **Dedicated support:** Our team offers hands-on support from setup to advanced customization, leveraging real-world experience in OMOP and OHDSI tooling.

We promote open science

Data2Evidence, developed by the nonprofit Data4Life, is dedicated to accelerating research through open science and collaboration. By choosing Data2Evidence, you are joining a global community dedicated to advancing health-care and driving innovation together.



Visit the website
► data2evidence.org
to explore the documentation, try out the platform or book a demo.



View the code
► github.com/OHDSI/Data2Evidence



Join the community
► data2evidence.org/discord

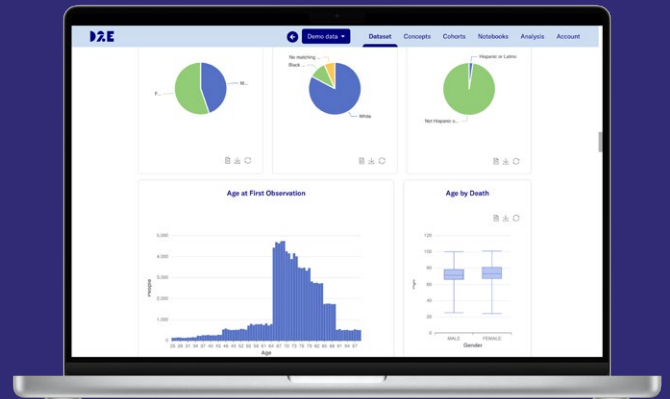
Key Benefits

INTUITIVE COHORT BUILDING

Define, refine, and assess patient cohorts with a no-code interface and real-time feedback across multiple data modalities.

INTEGRATED ANALYTICS & AI

Seamlessly integrate your workflows with support for Python and R notebooks, and get assistance with an innovative coding chatbot for data exploration.



COMPREHENSIVE INTEROPERABILITY

The platform supports OMOP CDM and FHIR while adhering to FAIR principles to ensure data standardization and accessibility for the global research community.

DATA QUALITY CHECKS

The platform offers standard data quality checks that can be run on your entire dataset or on specific cohorts.

POWERFUL DATA CHARACTERIZATION DASHBOARDS

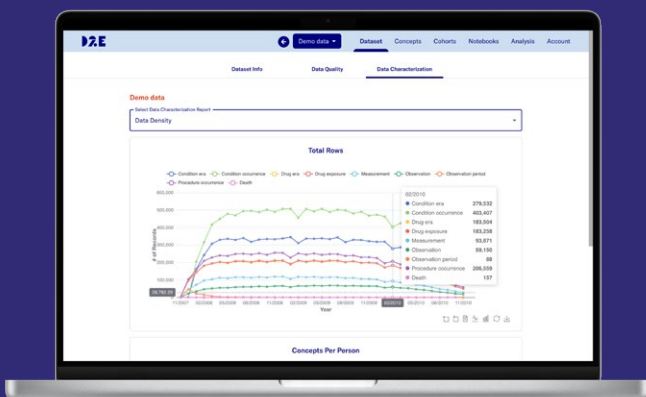
Use customizable dashboards for interactive data views to monitor quality and evaluate a dataset's utility.

FEDERATED AND COLLABORATIVE RESEARCH

Easily share cohort definitions and work together on notebooks via Git while participating in large-scale federated studies.

FLEXIBLE DEPLOYMENT

The containerized architecture allows for both on-premise and cloud-based deployments.



Use Cases

Bridging the gap between data management and research:

Support for Data Custodians / Data Administrators: Delivering high-quality OMOP datasets ready for research by providing tooling to scan, map, transform, and validate data, while managing secure access.

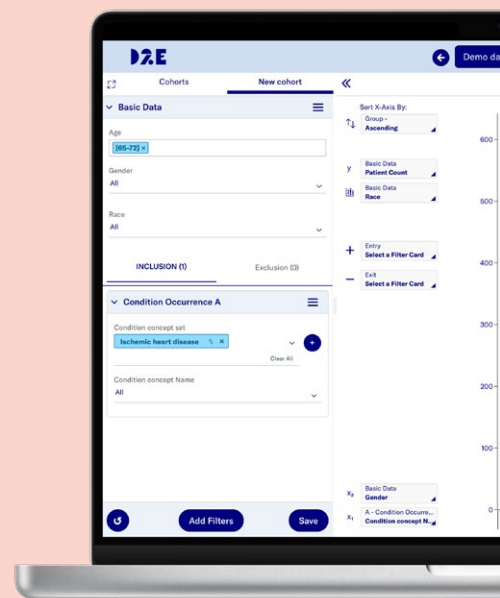
Support for Researchers: Accelerating discovery and collaboration with tooling to build cohorts with a no-code interface, run feasibility checks, and analyze data in interactive notebooks.

Data Scientists

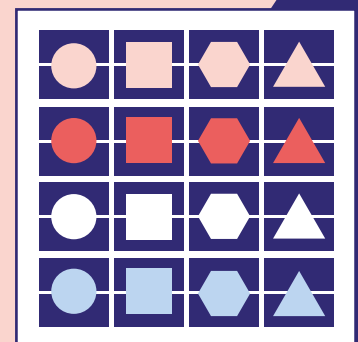
Transform complex health data into standardized research datasets.

With Data2Evidence, you manage the entire ETL process – visually, transparently, and reproducibly.

- Scan raw source data with White Rabbit
- Visually design mappings to the OMOP CDM using Rabbit in a Hat
- Automate and orchestrate data transformation with Prefect
- Run integrated data quality checks via the Data Quality Dashboard (DQD)
- Manage fine-grained user roles for compliant and secure data access



"We used to spend weeks cleaning and transforming datasets manually. Now, with Data2Evidence, I can quickly scan, map, and validate data—all in one place. Role-based access controls ensure researchers only access what they're approved for."





"Accessing standardized OMOP data has never been easier. I can visually define cohorts, test feasibility in real-time, and dive straight into analysis—all within one platform."

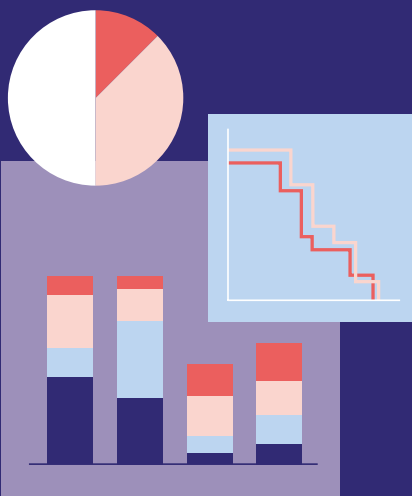


Researchers & Clinicians

From research question to cohort—
in minutes.

Define, refine, and analyze your patient cohorts
with ease – no coding required.

- Intuitive cohort builder with real-time feasibility feedback
- Visual concept selection based on standardized OMOP terminology
- Integrated Jupyter Notebooks for statistical analysis and visualization
- Share cohorts and analyses via Git integration for reproducibility
- Export cohorts to ATLAS for study execution



Built by and for the OHDSI community

Data2Evidence is an end-to-end research platform that supercharges the OHDSI ecosystem—combining familiar tools with powerful new features to make high-quality research faster, easier, and more reproducible.

INTEGRATED OHDSI TOOLS:

- White Rabbit & Rabbit in a Hat
- Data Quality Dashboard (DQD)
- Achilles
- PHOEBE
- ATLAS
- HADES
- Strategus

ENHANCED CAPABILITIES:

ETL Pipeline Orchestration: The platform provides a streamlined workflow for transforming heterogeneous source data from disparate systems into the OMOP CDM. It utilizes Prefect, a modern workflow management system, to manage and monitor these pipelines. This offers enhanced transparency, supports error handling, and improves the overall reproducibility of the data transformation process.

Data storage and user management: Data2Evidence enables secure and compliant data storage while providing seamless governance workflows and fine-grained role based access control.

FHIR server integration: The platform's FHIR support provides a powerful solution for accessing and managing clinical data, bridging the gap between health data exchange standards and the OMOP CDM for research.

Network research studies: The platform enables secure, privacy-preserving, multi-site studies by allowing analyses to be run without transferring sensitive patient data, making cross-site collaboration both secure and efficient.

LET'S SHAPE THE FUTURE OF HEALTHCARE

Contact Us

Do you want to know more about Data2Evidence?
Or are you interested in our projects or in a cooperation?



Dr. Karthik Seetharaman
Lead Product Manager

karthik.seetharaman@data4life-asia.care



Find Karthik
on LinkedIn



Tim Walz
Chief of Staff

tim.walz@data4life-asia.care



Find Tim
on LinkedIn

About Data4Life

Data2Evidence, developed by the nonprofit Data4Life, is dedicated to accelerating research through open science and collaboration.

With support from the Hasso Plattner Foundation and partnerships with leading research institutions, we are building infrastructure that empowers global health research.

Discover our D4L Evidence Health Solutions:

► data4life.care